

HOUSE COMPLETIONS SINCE 1999

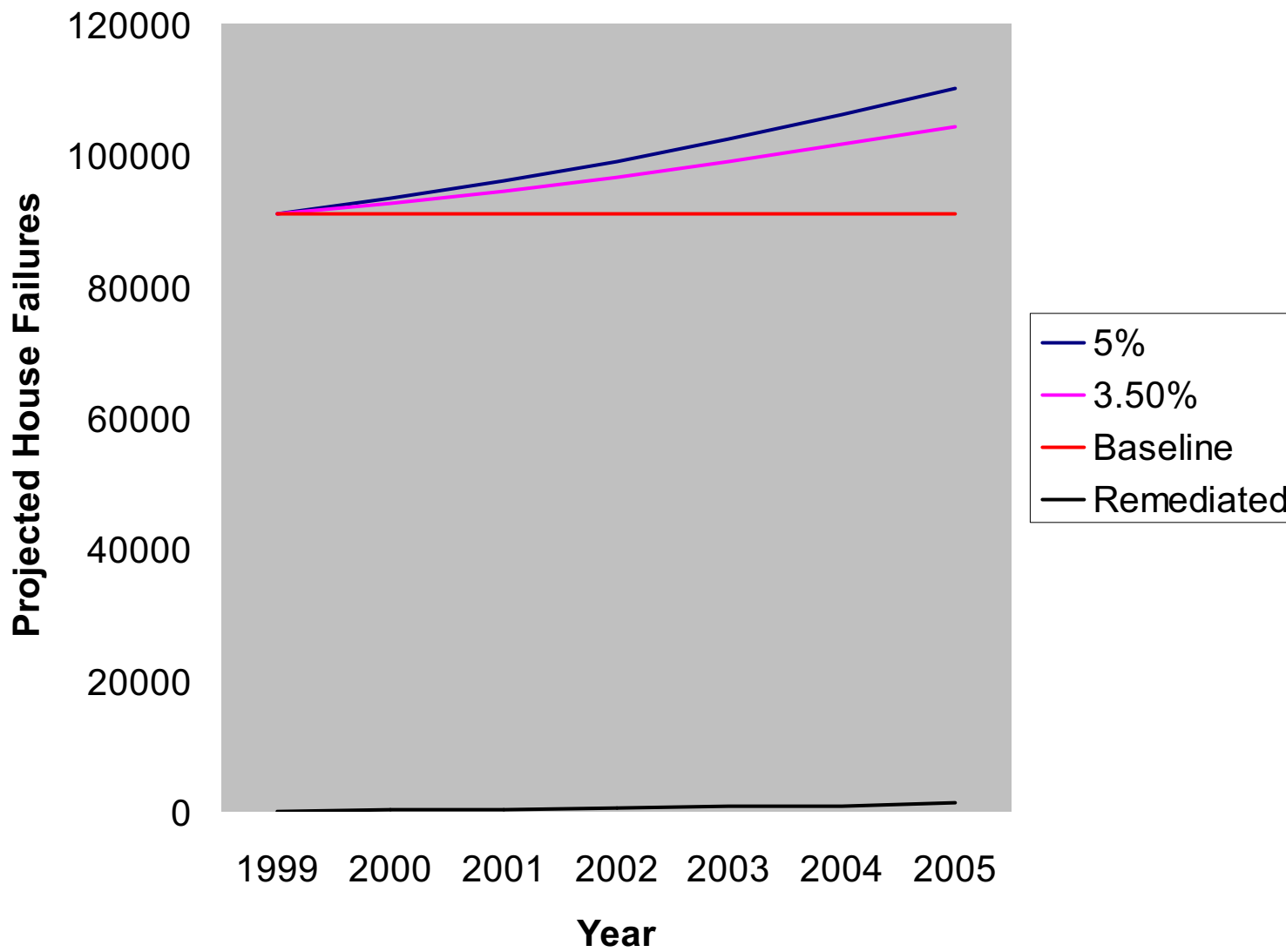
Source: Central Statistics Office

2000	49,812
2001	52,602
2002	57,695
2003	68,819
2004	76,954
<u>3005</u>	<u>77,000</u>
	382,882

@ 3.5% over 200 Bq/m³.....13,400 homes

@ 5% over 200 Bq/m³.....19,144 homes

Growth of Radon Problem



Comparison of Radon Statistics Republic v Northern Ireland

	Republic	N.I.
Average radon levels (Bq/m ³)	89	19
% homes over 200 Bq/m ³	7%	0.6%
Definition of high radon area	10%	1%
Barriers required	>10%	>1%
Inactive Sumps required	All	>10%

SUMMARY

- **Enforce Workplace Legislation**
- **New Legislation:**
 - Redefine high radon area >1%.
 - Redefine requirement for inactive sumps.
 - New legislation on testing new homes.
- **State Funding:**
 - Remediation
 - Testing.
 - National TV/Radio campaign.
- **Keep it simple!**